



SWISS[®]  **APLAN**
GROUP OF COMPANIES

| | |
|-------------------------|--|
| Address | Rua Prof. Francisco Maffei, 462, Interlagos |
| Brazilian Branch | São Paulo (Brazil) Zip 04788-080 |
| Responsible | Mrs Edda Silvestro |
| Telephone | +55 11 56676321 – Mobile: +55 11 971234616 (whatsApp) |
| e-mail | swissgroup@uol.com.br |

SWISS[®] APLAN

GROUP OF COMPANIES

SCO Soft Corporation Offer ECO Sandwiches Houses

WITH SOLAR ENERGY SYSTEM, 5 Kwh /10 Kwh

| | | | |
|---|--------------|-------------|---------------|
| SK- 37M , 2 Bedroom, Kitchen, Bathroom | 37sq m2 | (5 K wh) | \$ 9,995.00 |
| SK - 57M 3 Bedroom, Kitchen, Bathroom | 57sq m2 | (5 K wh) | \$-11 ,895.00 |
| SK- 74M 4 Bedroom, Kitchen, Bathroom | 74sq m2 | (5 K wh) | \$ 14,695.00 |
| SK-73.84 3 Bedroom,Kitchen,Bath,Porch,Canopy, | 73.84sq m2 . | (5 K wh) | \$ 17,500.00 |
| SK -100 4 Bedroom, Kitchen, Dining room, Living room, 2 Bath | | | \$ 22,950.00 |
| 2 Cars Garage 1 Floor. | 100 sq m2 | (10 K wh) | |
| SK - 150 4 Bedroom, Kitchen, Dining room, Living room, 2 1/2 Bath | | | \$ 28,950.00 |
| 2 Car Garage 1 Floor. | 150 sq m2 | (10 Kwh) | |

PAYMENT: Against all Shipping Documents, At China Port, CIF Brazil

ECO Houses Complete, Appliances, Furniture, Eletronics



Mrs.Edda Silvestro ceo

Rua Prof. Francisco Maffei, 462, Interlagos Sao Paulo Brazil zip 04788-080
tel. +55 11 56676321 55 11 97123-4616 e-mail swiss group@uol.com.br



SWISS[®] K APLAN
GROUP OF COMPANIES

SK - 150 4 Bedroom, Kitchen, Dining room, Living room, 2 1/2 Bath
2 Car Garage 1 Floor. 150 sq m2

PAYMENT: Against all Shipping Documents, At China Port, CIF Brazil

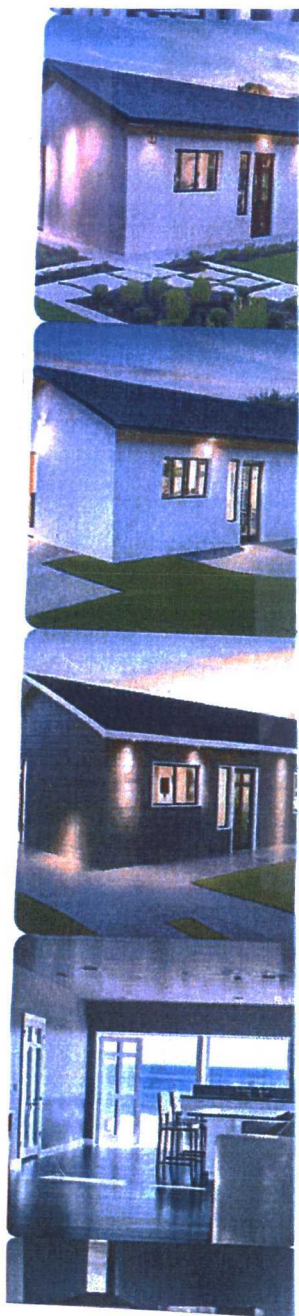
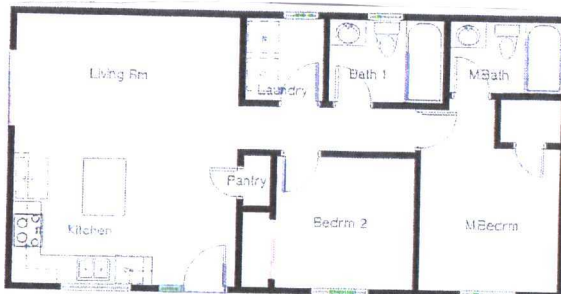
SWISS[®] APLAN

GROUP OF COMPANIES

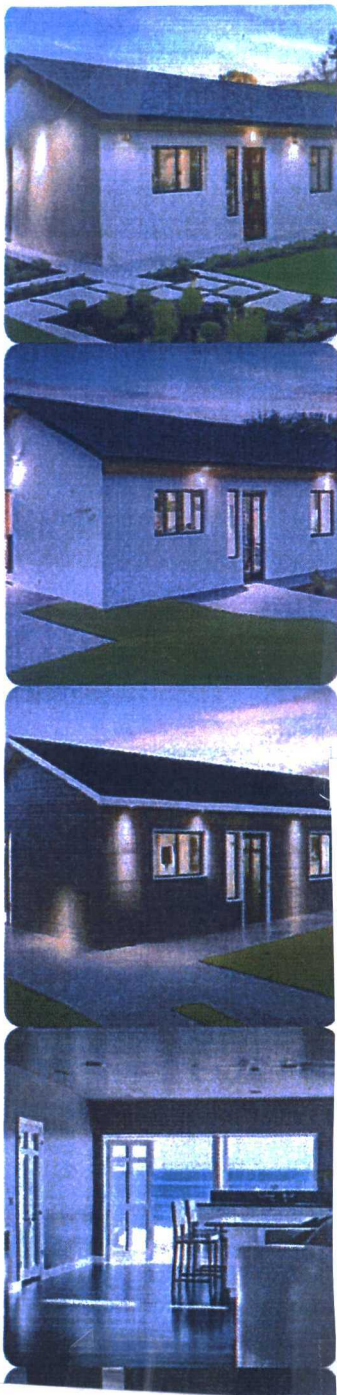
ECO HOUSES OUTLET



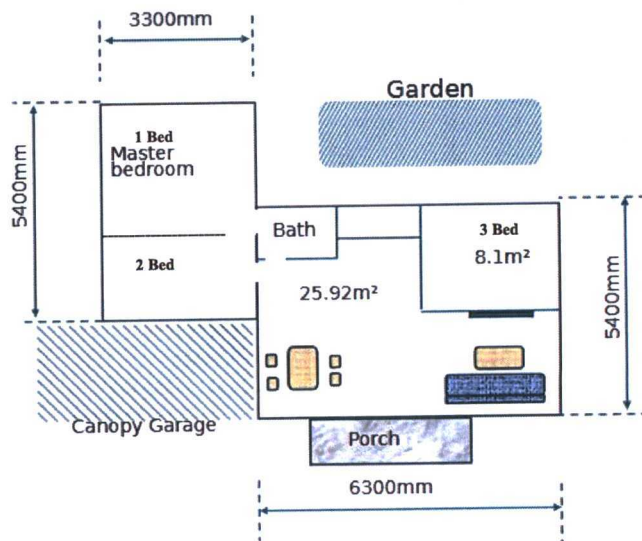
SK -100 4 Bedroom, Kitchen, Dining room, Living room, 2 Bath
2 Cars Garage 1 Floor. 100 sq m2



SWISS[®] KAPLAN



SK-73.84 3 Bedroom, Kitchen, Bath, Porch, Canopy, 73.84sq m2



Total area 51.84m²
 Steel porch and canopy area 22m²
 Cost: 1. House 51.84*
 2. Canopy and porch with sloping roof

Freight: Calculated according to 62.84m²

SGS report \$650.00, including electronics, metal and other construction material. But it can be apportioned to each house

Quotation is as below:
 Sandwich house with two different sloping roofs,
 51.84m²+22m² shed

Sandwich built-up house is a kind of rapid assembled house with steel structure and steel sandwich panel wall. The thickness of outer wall 75mm, service life is more than 20 years.

We use extra heavy U-shaped steel and square shaped steel as the structural components to build the house structure. The outer wall and inner wall material are made by ruggedized steel sandwich rock wool board.

All the connecting pieces were made by stamping mold with hot-dip galvanization, all drilled holes and cutting part were treated rust prevention. The video shows how to build up the house.

Quotation for Sandwich Panel house with

Four room Price: FOB China Main seaport

Material:

- Stand Column Steel square tube 100*100*2.5mm 2.5mm
- Beam of roof Steel square tube 100*100*2.5mm 2.0mm
- Roof Purline 0#C Type steel purlin 2.0mm Grade beam
- Galvanized Groove 1.0mm Ring Beam Steel flat 80*40
- 2.0mm Interior Wall 50mm*1150 Steel rock wool board Double sided 0.426mm
- Outer Wall 50mm*1150 Steel rock wool board Double sided 0.426mm



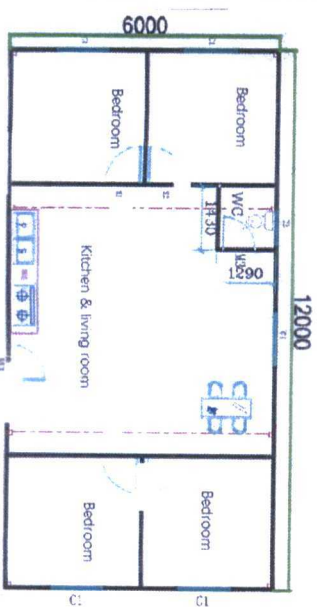
ECO OUTLET

Wall thickness 75mm

| Part | Material | Thickness |
|---------------|---------------------------------|----------------------|
| Stand Column | Steel square tube 100*100*2.5mm | 2.5mm |
| Beam of roof | Steel square tube 100*100*2.5mm | 2.0mm |
| Roof Purline | 0#C Type steel purlin | 2.0mm |
| Grade beam | Galvanized Groove | 1.0mm |
| Ring Beam | Steel flat 80*40 | 2.0mm |
| Interior Wall | 50mm*1150 Steel rock wool board | Double sided 0.426mm |
| Outer Wall | 50mm*1150 Steel rock wool board | Double sided 0.426mm |
| Pantiled Roof | 50mm*950 Steel rock board | Double sided 0.426mm |
| Edge | Colored steel bended sheet | Double sided 0.426mm |
| Window | Plastic steel (1125W*1100H) | |
| Door | Steel door 840mm*2035mm | |
| Cables | Insulation tube | |



Pantiled Roof 50mm*950 Steel rock board Double sided 0.426mm Edge Colored steel bended sheet Double sided 0.426mm Window Plastic steel (1125W*1100H)



SK-74M 4 Bedroom, Kitchen, Bathroom 74sq m2

GROUP OF COMPANIES

Real Picture

Quotation for Sandwich Panel house with

Three room Price: FOB China Main seaport

2.0mm Interior Wall 50mm*1150 Steel rock wool board
 Double side0.426mm
 Outer Wall 50mm*1150 Steel rock wool

Size: L6,000mm*W9,000mm*H2,800mm, 54m² board Double side0.426mm Partiled

Part Material Thickness

Material:
 Stand Column Steel square tube 100*100*2.5mm 2.5mm
 Roof Purline 0#C Type steel purlin 2.0mm Grade beam
 Galvanized Groove 1.0mm Ring Beam Steel flat 80*40

Roof 50mm*950 Steel rock board
 Double side0.426mm Edge Colored
 steel bended sheet Double
 side0.426mm Window Plastic steel
 (1125W*1100H)
 Door Steel door 840mm*2035mm

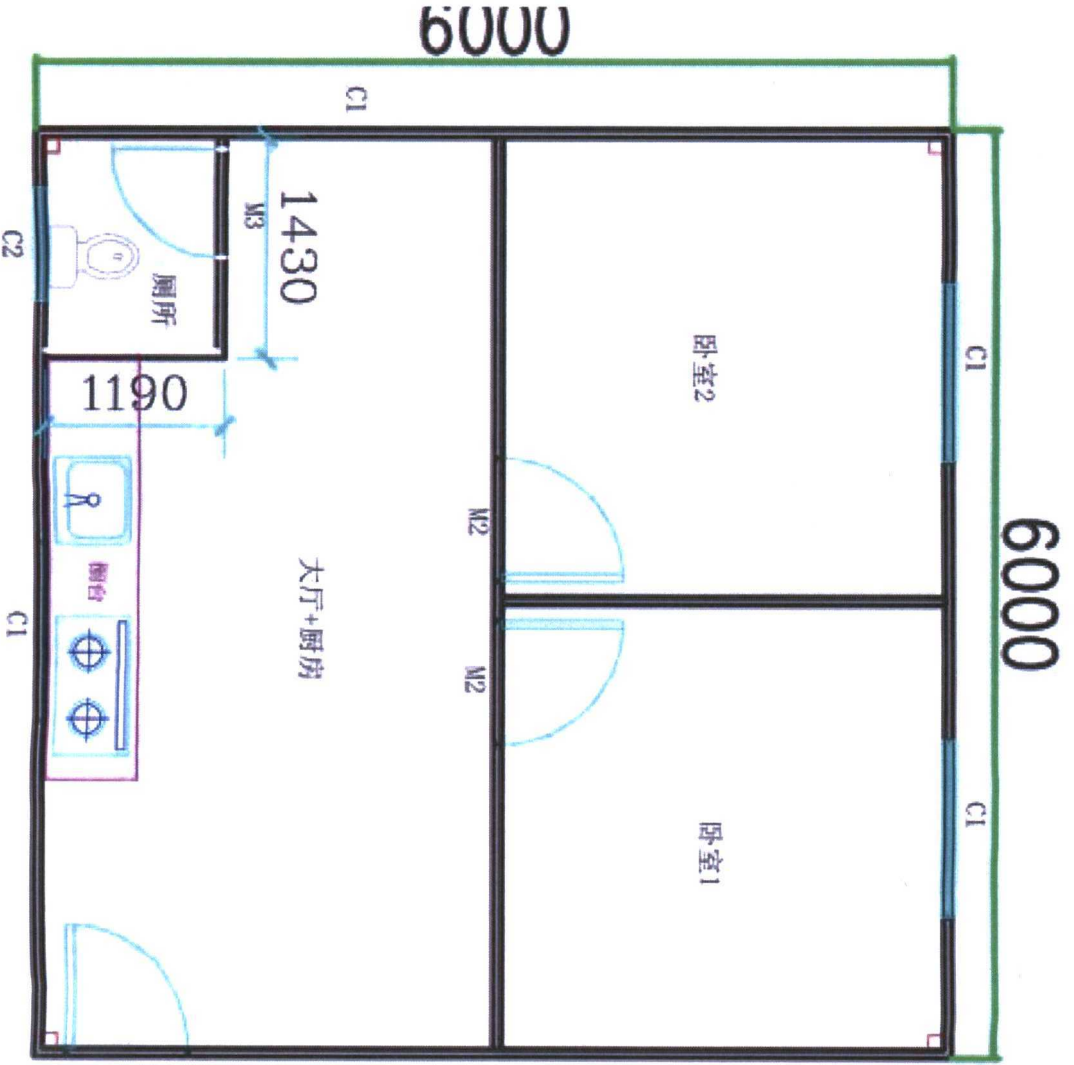


Real Picture



SK-57M 3 Bedroom, Kitchen, Bathroom 57sq m²

side0.426mm Edge Colored steel bended sheet Double side0.426mm Window Plastic steel (1125W*1100H)
 Door Steel door 840mm*2035mm



Cables Insulation tube



Bedroom WC



SUNYISS[®] **APLAN**
 GROUP OF COMPANIES

WITH SOLAR ENERGY SYSTEM, 5 kwh
SK-37M, 2 Bedroom, 1 Bathroom 37sq.m2

ORGANIZATION FOR TECHNICAL CONFORMITY

FACTORY PRODUCTION CONTROL CERTIFICATION BODY

CE 2787

CERTIFICATE

OF CONFORMITY OF THE FACTORY PRODUCTION CONTROL

2787 - CPR – 01452

In compliance with Regulation (EU) No 305/2011 of the European Parliament and of the Council of 9 March 2011 (the Construction Products Regulation or CPR), this certificate applies to the construction product

STRUCTURAL COMPONENTS FOR STEEL STRUCTURES
PREFAB CONTAINER HOUSE, Model: K-style, T- Style, Container Style, Villa style,

according to EN 1090-2, executive class EXC1, EXC2
with performance and test methods as provided in the manufacturer's declaration of performance placed on the market and produced in the manufacturing plant of

SUZHOU ZHONGNAN STEEL STRUCTURE Co., Ltd
Zhenze Town Wujiang District Suzhou City, Jiangsu Province, China

- method of declaration 3a) and 3b) according to table A1 of EN 1090-1:2009+A1:2011
- execution of manufacturing processes: cutting, drilling, bending, welding, NDT, corrosion protection

This certificate attests that all provisions concerning the assessment and verification of constancy of performance described in Annex ZA of the standard

EN 1090-1:2009+A1:2011

under system 2+ are applied and that the factory production control is assessed to be in conformity with the applicable requirements

This certificate was first issued on 18.09.2024 and will remain valid to 17.09.2027, provided that the harmonised standard, the construction product, the AVCP methods and the manufacturing conditions in the plant are not modified significantly, unless this certificate was not suspended or withdrawn by the notified production control certification body.

This Certificate contains an Annex from one page and as an inseparable Part.

This Certificate is valid only with a Document of validity which is an inseparable part of this Certificate.

Department Head:

Vera Tsvetkova



Sofia, September 18, 2024

OTC Bulgaria Ltd.

OTC, Notified Body Number 2787 from the Register of the European Commission

12 Hristo Belchev Str., 1000 Sofia, Bulgaria

www.otc-bg.com

ORGANIZATION FOR TECHNICAL CONFORMITY



FACTORY PRODUCTION CONTROL CERTIFICATION BODY

ANNEX 1 WELDING CERTIFICATE

This Welding Certificate is Appendix 1
to the Certificate of conformity of factory production control **2787 - CPR – 01452**,
issued on 18.09.2024, valid until 17.09.2027

| | |
|---|---|
| Manufacturer: | SUZHOU ZHONGNAN STEEL STRUCTURE Co., Ltd |
| Production factory: | No. 2 Boyuan Road, Xinqiao Town, Jiangyin City, China |
| Technical specification: | EN 1090-2:2018 |
| Welding Process (es) (reference number by EN ISO 4063): | 135 – MAG welding with solid wire electrode |
| Main materials: | S235, according to EN 10025-2 |
| Person responsible for welding supervision (name, surname, date of birth, qualifications): | Welding Coordinator: Mr. Zhengwei Zhen, born: 18.09.1988 Technical knowledge (EN ISO 14731): B - basic |

Department Head

Vera Tsvetkova



Sofia, September 18, 2024





CERTIFICATE

ATTESTATION CERTIFICATE OF ELECTROMAGNETIC COMPATIBILITY AND LOW VOLTAGE DIRECTIVES

Technical file of the company mentioned below has been inspected and audit has been completed successfully.

2014/30/EU Electromagnetic Compatibility Directive and 2014/ 35/EU Low Voltage Directive has been taken as references for these processes.

Company Name : WENZHOU SHANGRAN ELECTRICAL CO., LTD.

Company Address : No.48, Ningyu Road, Quxi Street, Ouhai Dist, Wenzhou, Zhe jiang, China

Related Directives and Annex : 2014/35/EU Low Voltage Directive
2014/30/EU Electromagnetic Compatibility Directive

Related Standards : EN 60669-1:2018, EN IEC 61000-3-2:2019+A1:2021
EN 61000-3-3:2013+A2:2021, EN IEC 61000-6-1:2019
EN IEC 61000-6-3:2021

Product Name : Switch

Report No and Date : STCF031003-LVD/EMC

Product Brand/Model/Type : GANG-A001,GANG-B001,GANG-A002,GANG-B002,GANG-A003,GANG-B003,
GANG-A004,GANG-B004,GANG-A1000,GANG-A1004,GANG-A1005,GANG-A1006,
GANG-A1007,GANG-A1008,GANG-A1009,GANG-A1010,GANG-C001,GANG-D001,
GANG-C002,GANG-D002,GANG-C003,GANG-D003,GANG-C004,GANG-D004,
GANG-E001,GANG-F002,GANG-E003,GANG-F003,GANG-E006,GANG-F006,
GANG-E007,GANG-F008,GANG-E009,GANG-F010,GANG-E011,GANG-F011,
GANG-G001,GANG-H002,GANG-G002,GANG-H003,GANG-G003,GANG-H04,
GANG-G004,GANG-H001,GANG-H002,GANG-H003,GANG-H004,GANG-H005,
GANG-H006,GANG-H07,GANG-H008,GANG-H009,GANG-H010,GANG-H011,
GANG-I001,GANG-J001,GANG-I002,GANG-J002,GANG-I003,GANG-J003,
GANG-K004,GANG-J004,GANG-I001,GANG-K002,GANG-I003,GANG-K004,
GANG-I005,GANG-K006,GANG-K007,GANG-K008,GANG-K009,GANG-K010,
GANG-K011

Certificate Number : M.2023.206.C82846

Initial Assessment Date : 16.03.2023

Registration Date : 17.03.2023

Issue Date/No : -

Expiry Date : 16.03.2028

UDEM International Certification
Auditing Training Centre industry
and Trade Inc. Co

The validity of this certificate is restricted to the product for which it is issued. The certificate is the property of UDEM International Certification Auditing Training Centre industry and Trade Inc. Co. In case of loss it must be returned upon request. The above named firm must keep a copy of this certificate for 11 years from the registration of certificate. This certificate only covers the product's compliance with UDEM and is not a proof of compliance of any other product or the process.

Address : Multi-Kent 34 project, 2074 Sokak, Blok: 13, 20148, Huzulü, Düzce, Kocaeli, Turkey


Phone : +90 (312) 442 03 70, **Fax** : +90 (312) 442 03 70

E-mail : info@udem.com.tr, www.udem.com.tr



Test Verification of Conformity

On the basis of the referenced test report(s), sample(s) of the below product have been found to comply with the harmonized standards and Directives listed on this verification at the time the tests were carried out. Other standards and Directives may be relevant to the product.

Once all product relevant  mark directives are verified in compliance, the manufacturer may indicate compliance by signing a Declaration of Conformity themselves and applying the mark to product identical to the test sample(s) if the product complies with all relevant CE mark Directives requirements.


Applicant Name & Address : People Ele. Appliance Group Co., Ltd.
 People Industry Zone, Liushi, Yueqing, Zhejiang, 325604,
 P. R. China

Manufacturing site Name & Address : Same as applicant

Product(s) Tested : Circuit-breakers for overcurrent protection

Ratings and principal characteristics : Ue: 240V/415V~(1 pole), 415V~(2, 3, 4 poles);
 In: 3, 6, 10, 16, 20, 25, 32, 40, 50, 63A; B- and C- type ;
 Icn = Ics = 6000A (6~32A);
 Icn = Ics = 4500A (3, 40, 50, 63A)

Model(s) : DZ47-63

Brand name : 

Relevant Standard(s) / Specification(s) / Directive(s) : EN 60898-1: 2003 +A1: 2004+A11: 2005+A12:2008
 the Low Voltage Directive 2006/95/EC

Verification Issuing Office Name & Address : Intertek Testing Services Shanghai
 Building No.86, 1198 Qinzhou Road (North), Shanghai
 200233, China

Verification Number : 170201447SHA-V1

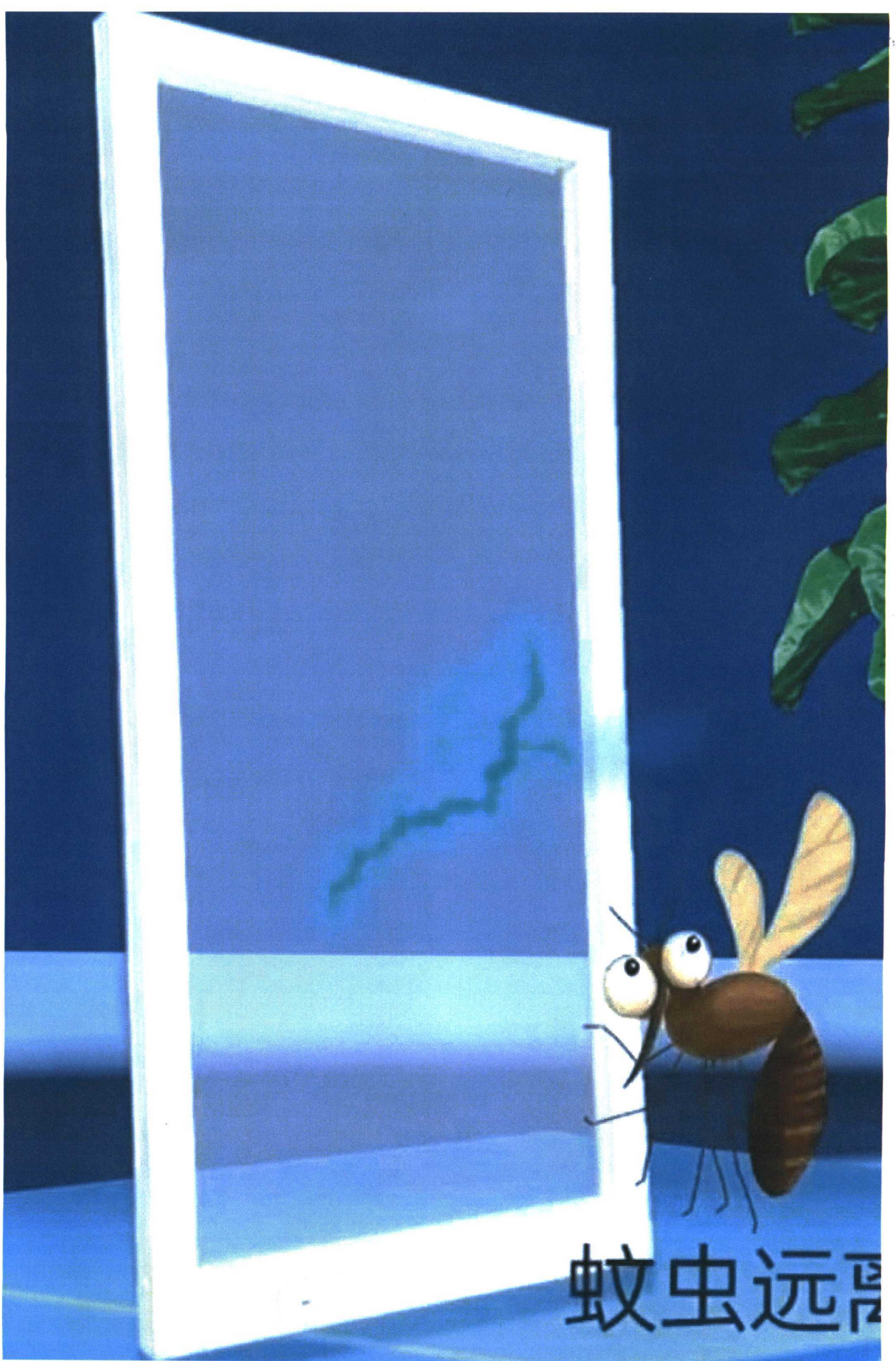
Report Number(s) : 170201447SHA-001, -002, -003, -004

NOTE 1: This verification is part of the full test report(s) and should be read in conjunction with it.

This Verification is for the exclusive use of Intertek's Client and is provided pursuant to the agreement between Intertek and its Client. Intertek's responsibility and liability are limited to the terms and conditions of the agreement. Intertek assumes no liability to any party, other than to the Client in accordance with the agreement, for any loss, expense or damage occasioned by the use of this Verification. Only the Client is authorized to copy or distribute this Verification. Any use of the Intertek name or one of its marks for the sale or advertisement of the tested material, product or service must first be approved in writing by Intertek. The observations and test results referenced from this Verification are relevant only to the sample tested. This Verification by itself does not imply that the material, product, or service is or has ever been under an Intertek certification program.



Oliver Wei
 Manager
 March 11, 2017

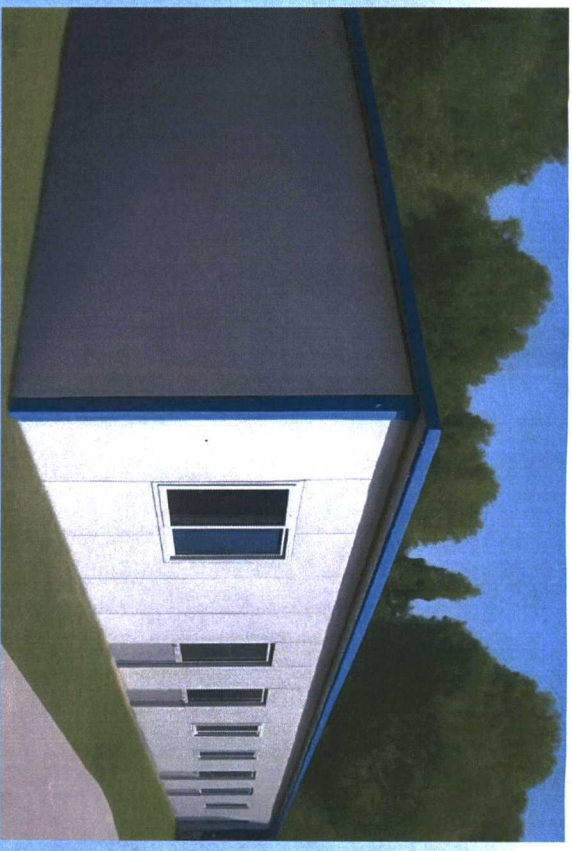
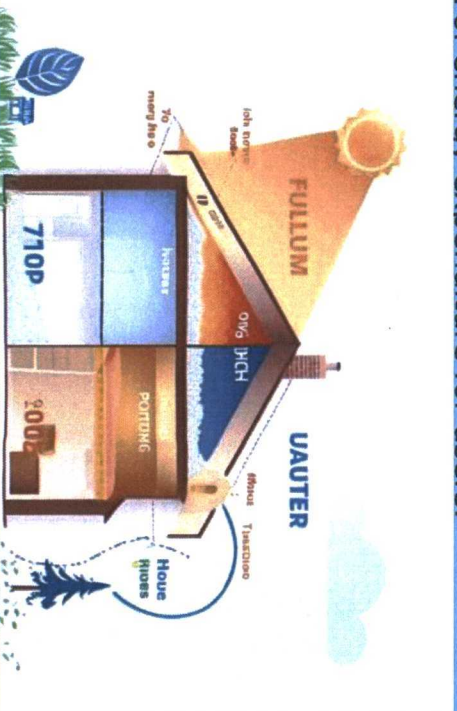


蚊虫远离

SWISS[®] APPLAN

GROUP OF COMPANIES

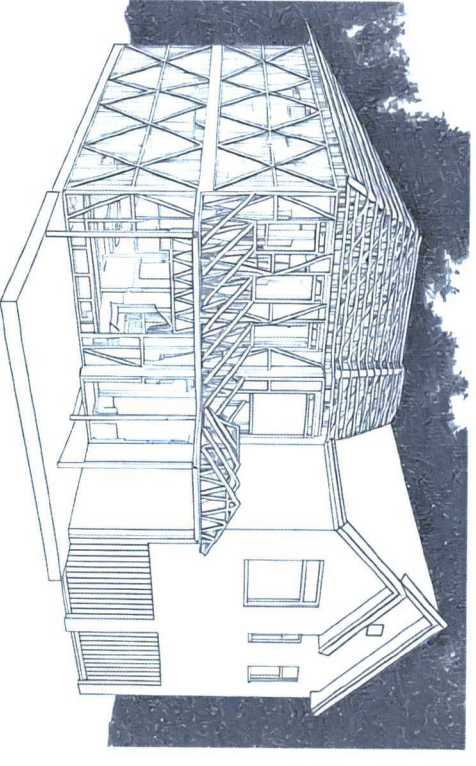
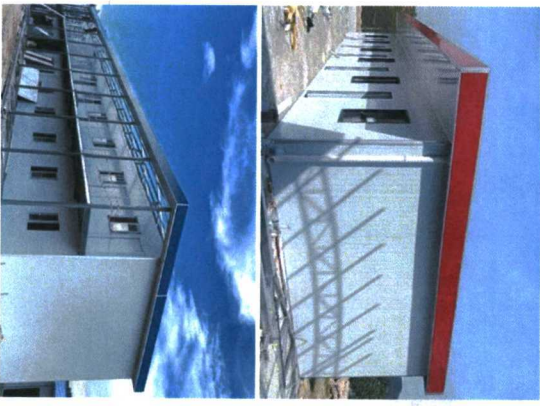
- ECO OUTLET is committed to the development of durable, cost-effective, home appliances, furniture and other supporting facilities, energy self-sufficient color plate housing, to realize your desire to have a highly economical and comfortable housing.
- The color steel panel house designed and developed by ECO OUTLET is made of double-sided thickened steel plates, fireproof insulation and rock wool filled sandwich panels, which can resist all kinds of bad weather and adapt to all kinds of terrain. It can be installed and used without building an underground foundation, just need to level and harden a piece of land.
- Fireproof design and the wide use of fireproof materials ensure that the occurrence of fire is avoided to the greatest extent.
- Asbestos sandwich layer can provide maximum thermal insulation efficiency and save a lot of energy expenditure for users.



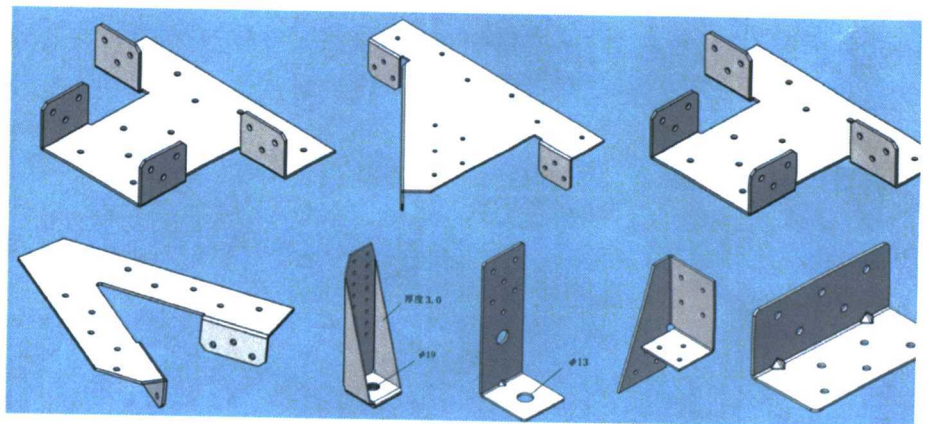
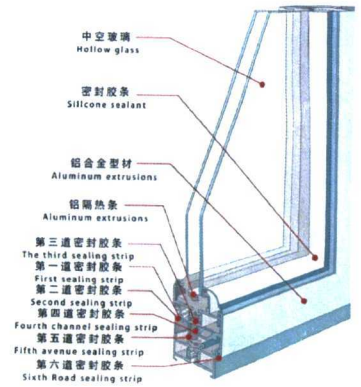
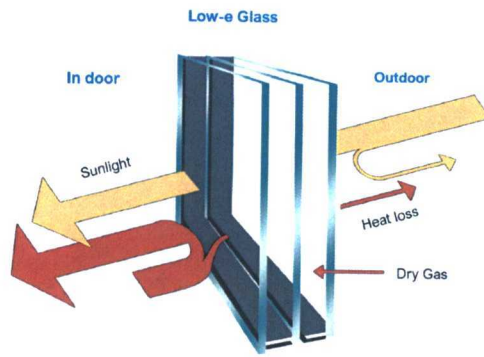
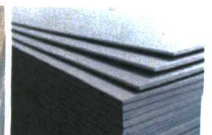


ECO OUTLET

Project case
Factory, office, residence, villa
Fireproof Houses



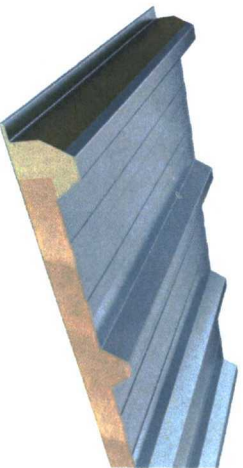
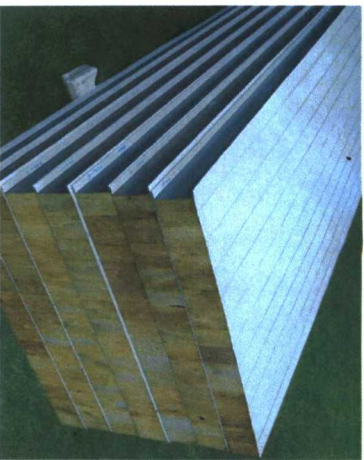
ECO OUTLET





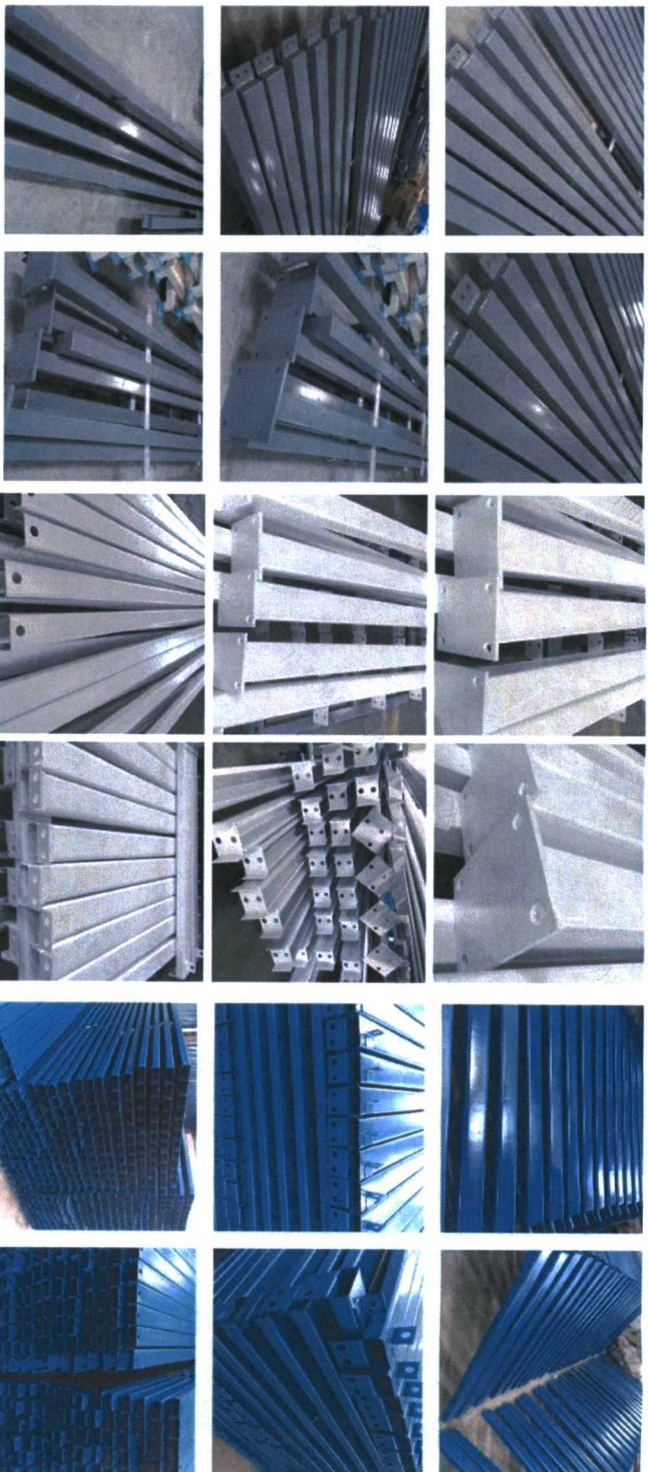
ECO OUTLET

Material

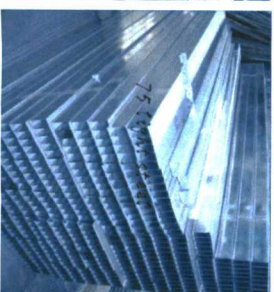


75mm Thickness Rock wool
Board Fire-Proof A class

We select good quality steel to build best house



Steel structure materials with stoving vanish rust prevention treatment



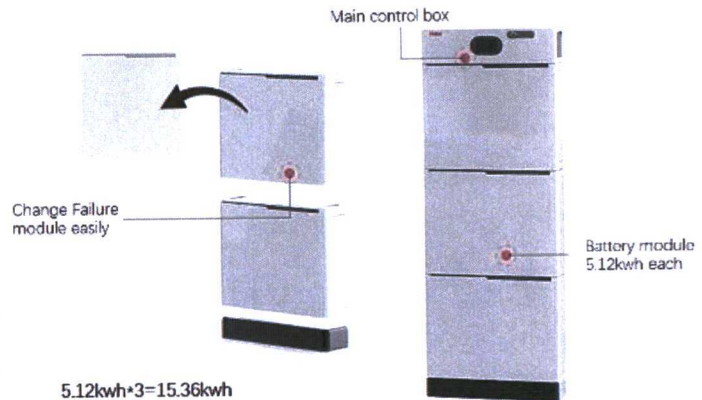
| | |
|------------------|---|
| Address | Rua Prof. Francisco Maffei, 462, Interlagos |
| Brazilian Branch | São Paulo (Brazil) Zip 04788-080 |
| Responsible | Mrs Edda Silvestro |
| Telephone | +55 11 56676321 -- Mobile: +55 11 971234616 (whatsApp) |
| e-mail | swissgroup@uol.com.br |

SUNWISS[®] K APLAN

GROUP OF COMPANIES

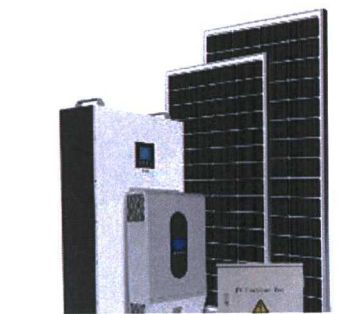
Why stackable battery module?

1. Reasonable design, adaptive different brand inverter,
2. Convenient for customer installation and marketing.
3. Can be any combination, the maximum combination can reach 60kwh
4. Wall-mounted installation greatly reduces installation costs
5. BMS protection system, Ensure safe operation of equipment
6. Better quality, warranty can reach real 5 years.

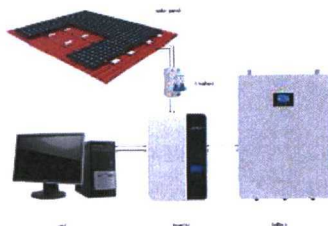


$5.12\text{kwh} \times 3 = 15.36\text{kwh}$

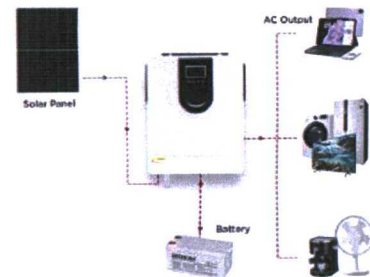
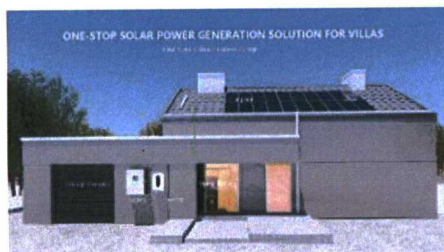
- Power Storage** | Storage of one module is 5.12kwh
- Series Connection** | Maximum 3 modules in series connection
- Parallel Connection** | Maximum 4 series connection modules in parallel Connection, power storage is 61.44kwh



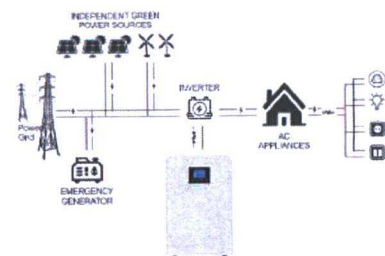
SCHEMATIC DIAGRAM OF WALL-MOUNTED ENERGY STORAGE



these pictures will be sent to you with high resolution for presentation



HOME ENERGY STORAGE PRODUCT ARCHITECTURE

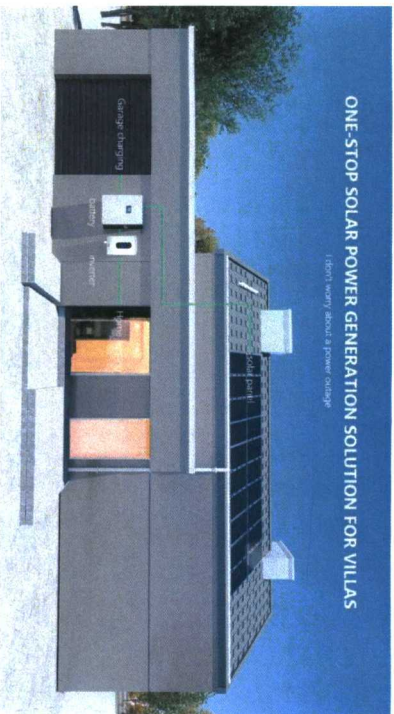
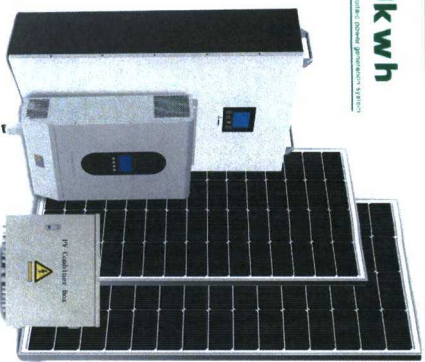




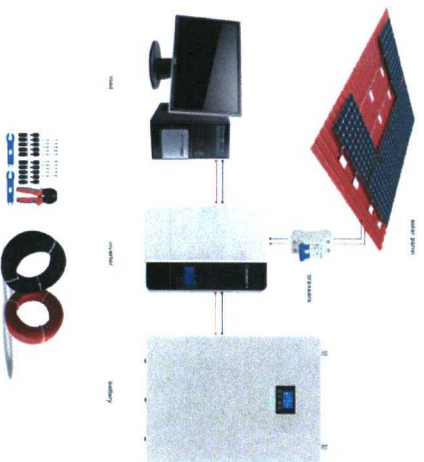
ECO OUTLET

10k wh

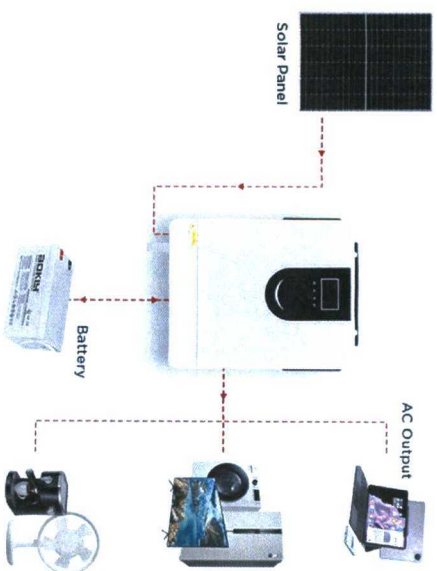
10kwh Solar power generation station



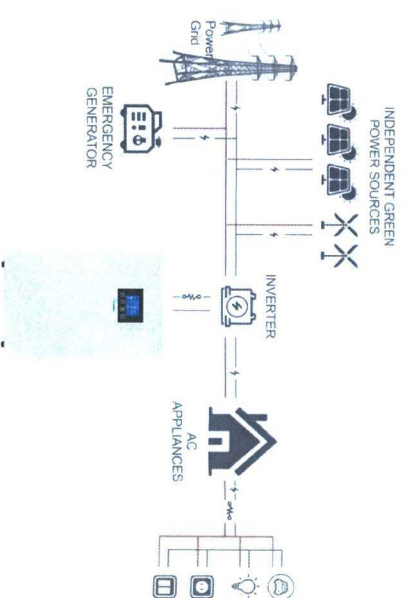
SCHEMATIC DIAGRAM OF WALL-MOUNTED ENERGY STORAGE



For the one bedroom, we suggest to configure a set of solar power generation system with 10.2 Kwh power storage capacity.



HOME ENERGY STORAGE PRODUCT ARCHITECTURE



GROUP OF COMPANIES

HOUSES # S - K 18m S - K 36m S -K 54m S -K 72m S-K73,8m S -K100m S-K150m

| | ALL HOUSES FOB CHINA with ALL Documents , SGS | | | | | CIF Any PORT | |
|-------------------------------|---|-----------|-----------|-----------|-----------|--------------|-----------|
| SOLAR POWER SISTEM | 5 Kwh | 5 Kwh | 5 Kwh | 5 Kwh | 5 Kwh | 10 Kwh | 10 kwh |
| CABINET BASIN | YES | YES | YES | YES | YES | YES | YES |
| SINK, FAUCET | YES | YES | YES | YES | YES | YES | YES |
| ELETRIC Water Heater | YES | YES | YES | YES | YES | YES | YES |
| REFRIGERATOR | YES | YES | YES | YES | YES | YES | YES |
| STOVE-Oven or Eletric hot Top | YES | YES | YES | YES | YES | YES | YES |
| SOFA | YES | YES | YES | YES | YES | YES | YES |
| TABLE CHAIRS | YES | YES | YES | YES | YES | YES | YES |
| WOODEN CABINET | YES | YES | YES | YES | YES | YES | YES |
| TV -SET | YES | YES | YES | YES | YES | YES | YES |
| AIR CONDITIONER X 2 SETS | YES 2 SET | YES 2 set | YES 2 set | YES 2 set | YES 2 set | YES 3 set | YES 4 set |
| WALL CUPBOARD | YES | YES | YES | YES | YES | YES | YES |
| WASH MACHINE | YES | YES | YES | YES | YES | YES | YES |
| BEDROOM SET | YES 1set | YES 2 set | YES 3 set | YES 4 set | YES 3 set | YES 4 set | YES 4 set |
| AIR CONDITIONER 5000 W. | YES | YES | YES | YES | YES | YES | YES |
| CABINET | YES | YES | YES | YES | YES | YES | YES |
| KITCHEN WITH Pluming | YES | YES | YES | YES | YES | YES | YES |
| Bathroom Complete & Pluming | YES | YES | YES | YES | YES | YES | YES |

The ECO OUTLET



| No. | Bedroom Drawing |
|-----|-----------------|
| 1 | |
| 2 | |
| 3 | |
| 4 | |

GROUP OF COMPANIES

| Description | Package | Solar energy |
|--|--|---|
| <p>18m² 75mm thickness over wall, 50mm thickness inner wall 5 Standard sockets, Distribution board Plastic windows bugs screen, Steel door A grade fireproof sandwich panel Heat conductivity coefficient 0.035-0.045w(m·k), much better than traditional brick wall</p> | <p>16 houses in one 40 feet HP container</p> | <p>Off grid solar energy system Power storage 5.12kwh, Inverter capacity 5.12kw</p> |
| <p>36m² 75mm thickness over wall, 50mm thickness inner wall 8 Standard sockets, Distribution board Plastic windows bugs screen, Steel door A grade fireproof sandwich panel Heat conductivity coefficient 0.035-0.045w(m·k), much better than traditional brick wall</p> | <p>8 houses in one 40 feet HP container</p> | <p>Off grid solar energy system Power storage 5.12kwh, Inverter capacity 5.12kw</p> |
| <p>54m² 75mm thickness over wall, 50mm thickness inner wall 11 Standard sockets, Distribution board Plastic windows bugs screen, Steel door A grade fireproof sandwich panel Heat conductivity coefficient 0.035-0.045w(m·k), much better than traditional brick wall</p> | <p>5 houses in one 40 feet HP container</p> | <p>Off grid solar energy system Power storage 5.12kwh, Inverter capacity 5.12kw</p> |
| <p>72m² 75mm thickness over wall, 50mm thickness inner wall 14 Standard sockets, Distribution board Plastic windows bugs screen, Steel door A grade fireproof sandwich panel Heat conductivity coefficient 0.035-0.045w(m·k), much better than traditional brick wall</p> | <p>4 houses in one 40 feet HP container</p> | <p>Off grid solar energy system Power storage 5.12kwh, Inverter capacity 5.12kw</p> |
| <p>Such bigger houses can be designed and made according to clients's requirement</p> | <p>300m² materials of sandwich houses can be loaded in 1 40HP</p> | <p>Can be ordered by customers</p> |

Kitchen Configuration



Kitchen Cabinet
Size: L1600mm* W50mm H775mm
#304 Stainless table board,
Water sink size: L350mm*W330mm*170mm
Water faucet goose neck type
Drainage pipe: Engineering Plastic with elbow



Kitchen Cabinet
Size: L1200mm* W50mm H775mm
#304 Stainless table board,
The table is for Electric ceramic stove

Living Room



Partition, ceramic basin, Glass mirror Separate door, Ceramic toilet, floor drain, Shower and sliding door.



L-Type cabinet, countertops, Stainless steel basin with Taps

SUWISS[®] APLAN

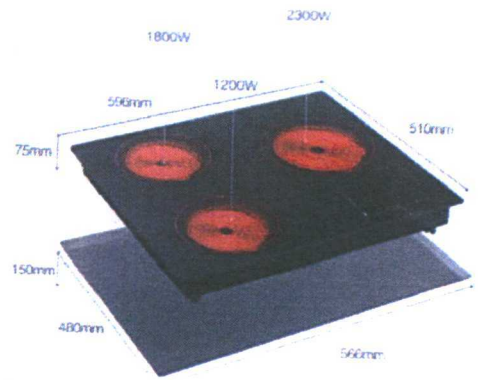
GROUP OF COMPANIES

| Picture | RANGE - OVEN | Description of Goods |
|--|--|--|
|  | <p>Name: Freestanding Oven Item: 50cm Gas Range Glass cover+S/S top panel Black body 4pcs enameled burner+aluminum spreader in cooktop 3*φ60 (1.5kW*3), 1*φ90 (2.2kW*1) Manual ignition for cook top(4 burner) and oven 2pcs Enameled pan support 4 gas burner and oven without safety Bottom gas burner in oven Oven with one grid, one tray 5pcs knob with base (Q1) Black coating handle Oven Capacity:60L Double Glass Oven Door Gas type: LPG CBU, Standard carton box and foam Product size: L500*W500*H820mm</p> |  |

ECO HOUSES OUTLETS ,com

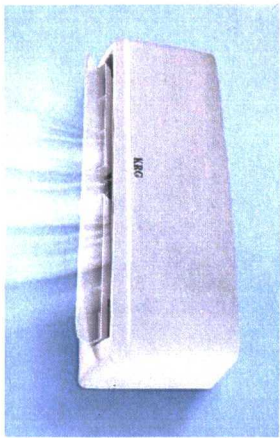
YOUR Choice Gas Ranger / Oven or Electric Stove
 Sua escolha Fogao ou Electric Ranger

Electric Ceramic Stove USD 
 Three burners infrared cooker
 Tempered glass A-grade micro-crystal panel
 Symbol touch button knob
 Glass Panel size: 670mm*510mm
 Power: 2000W+1800W+1200W
 Voltage: 110-240V/50Hz/60Hz

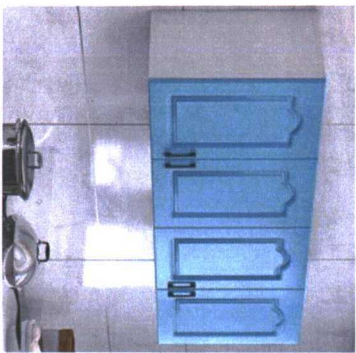




4. Electric water heater 8 liters water per minute
 Size: 280mm*190mm*65mm
 Constant temperature with digital display, 4 buttons control
 ABS casing + glass panel
 Power: 6KW
 Voltage: 220V-240V
 Currency: 27.3A
 Recommend wire > 4mm²



2. Air conditioner
 Split type air conditioner
 Refrigerating capacity: 2000 calorie
 Inverter compressor
 Size: 880mm*360mm*240mm
 Noise: 40dB



3. Wall cupboard
 L1600mm*H720mm*300mm
 It is for Kitchen room

4. Photovoltaic power generation system



PPGS system consists of the following:
 1. Solar Panel: 550W, 2279, single crystal silicon, Total
 2. Bracket: Hot-dip galvanizii
 3. DC combiner box: SPD protection
 4. Off-grid Inverter: 6KW/48V
 5. DC connector: MC4, total
 6. DC cable: 100V two rolls, etc.
 7. Storage battery: Lithium iron battery, 6000 times circulation
 8. Wooden package:



Wash machine
 7kg capacity, 96°C sterilize

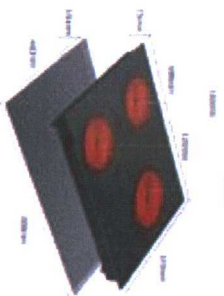
SUISSE[®] **APLAN**
 GROUP OF COMPANIES

H775mm

#304 Stainless table board,

The table is for Electric ceramic stove

INSTALLATION EASILY



Electric Ceramic Stove

Three burners infrared

cooker

Tempered glass A-grade micro-crystal

panel

Symbol touch button knob

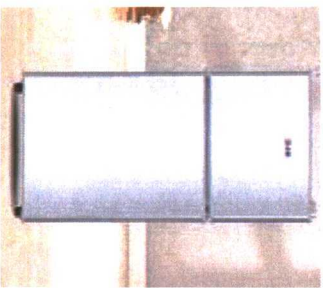
Glass Panel size :

670mm*510mm

Power: 2000W+1800W+1200W

Voltage: 110-240V/50Hz/60Hz

Refrigerator:



Size:455mmx440mmx1185mm

Volume: Cold chamber 66liters, Freezing chamber

42liters, Total 108 liters

Voltage: 220V-240V/50Hz-60Hz

Noise: Under 45dB

Current drain: 0.29 kw/h per 24 hours

Compressor: Mitsubishi BCD 118

Warranty: 2 years

Delivery: 30 days

Living Room



Wooden frame Fabric Sofa

L1530mm*H830mm*D580mm for Three people

L1130mm*H830mm*D580mm For two people

L600mm*H800mm*D580mm for one person

Coffee table: L 780mm*W400mm* H380mm

Wood: Rubber wood timber, very strong

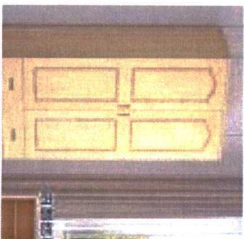


Table and chairs, **one table + 4 chairs**

Table size: L1,200mm*W800mm*H750mm

Material: Steel + WPC(wood & biofiber plastic composites)

Treatment of steel: High Temperature baking paint



Wooden Cabinet

Rubber wood timber

Two doors

Two drawer

2000mm*W800mm*D420mm



LCD TV Set

40 Inches with Narrow Bezel.

IGZO(Indium Gallium Zinc Oxide) TFT display from Sharp,

4K Full HD (ULTRA DEFINITION)

Brand: Panda

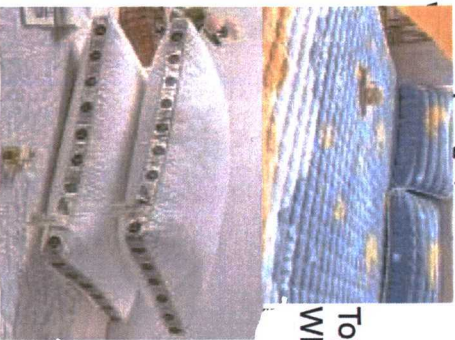


Steel Frame Bed: Baking paint
black or white



Mattress: Knitted fabric,
1000g non-glue-cotton
2CM compressed sponge,

Non-woven fabrics,
7CM2560 high density and
high resilience sponge
Non-woven fabrics,
1CM sponge,



Top mattress,
WD-A Soybean Fabre

Pillow
WD-A Soybean Fabre core
Cotton fabric cover

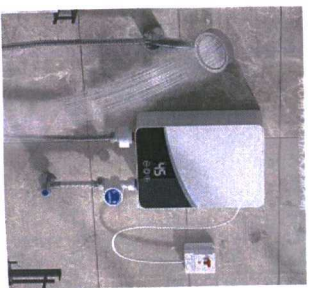


Blanket
Extra heavy blanket



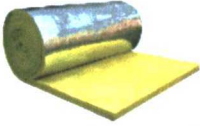
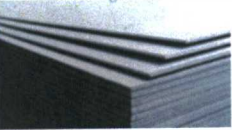




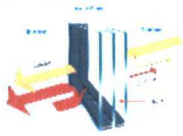
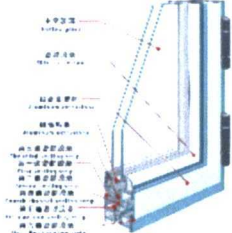


Bed sheet, duvet cover and pillowcase 100%
cotton high-count textile

Optional configuration:





4.Electric water heater 8 liters water per minute
Size:280mm*190mm*65mm
Constant temperature with digital display, 4 buttons
control
ABS casing +glass panel
Power: 6KW
Voltage: 220V-240V
Currency: 27.3A
Recommend wire>4mm²

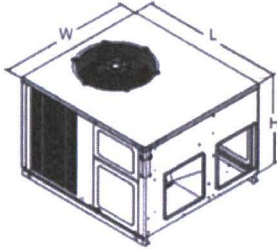
| | | | | | |
|--------------------------|---|--------------------------------------|---|---|--|
| 18 | 6 | Outer wall inside board | calcium silicate board, thickness 8mm |  | Fiber reinforced type |
| Interior wall | | | | | |
| 20 | 1 | wet area (Bath, kitchen) | High density cement fiber board, thickness 8mm | | Fiber reinforced type |
| 21 | 2 | Dry area | calcium silicate board, thickness 8mm |  | Fiber reinforced type |
| 22 | 3 | Interior wall packing layer | Glass wool, thermal insulation, sound insulation, energy conservation (16kg/m ² , Aluminum foil faced on one side) |  | |
| Floor and ceiling | | | | | |
| 24 | 1 | Wet area (Bath, kitchen and Balcony) | High density cement fiber board, thickness 18mm |  | Fiber reinforced type |
| 25 | 2 | Dry area | OSB 18mm thickness |  | |
| 27 | 4 | Suspended ceiling | calcium silicate board, thickness 6mm |  | Fiber reinforced type |
| waterproofer | | | | | |
| 29 | 1 | | High tenacity waterproof polyester cloth |  | 1 layer cloth+ 2 layers oil, Altitude above ground 300mm, 2 layers cloth +3 layers oil in corner |
| 30 | 2 | Bathes, Kitchen balcony | Waterborne polyurethane waterproof coating |  | |
| Window and door | | | | | |
| 32 | 1 | Window s | LOW-E Glass |  | Low-E glass can absorb infrared and prevent heat loss. |
| 33 | 2 | Window, door frame | can be made according to customer design |  | Aluminum frame |
| Hesting floor | | | | | |

1_CA quotation.xlsx

Open with

| | A | B | C | D | E | F |
|---|--|---------------------|--|---|--|---|
| 1 | Material list for Passive house | | | | | |
| 2 | Series | Items | material | Photo | Memo | |
| 3 | Main Frame system | | | | | |
| 4 | 1 | Main structure keel | cold forming sectional steel (1.2mm) Warranty 50 years |  | Hot plated aluminum extra high grade steel | |
| 5 | 2 | auxiliary material | cold formed high strength connector | | dip galvanizing | |
| 6 | Roof covering | | | | | |
| 7 | 1 | Roof tile | Synthetic resin tile. A class fireproof, high property thermal insulation. Warranty 30 years |  | M | |

GPH AC TOWER UNIT 13 Ton HVAC, CENTRAL AC AHRI Standard 210/240-2008



- R-410A
- Copeland AR CONDICIONADO UNIDADE de 13 Ton, CENTRAL

